

PACE **TECHNOLOGIES**

IM-5000 Inverted Metallurgical Microscope

**Brightfield
Darkfield
Polarized Light
Differential Interference Contrast**

Applications:

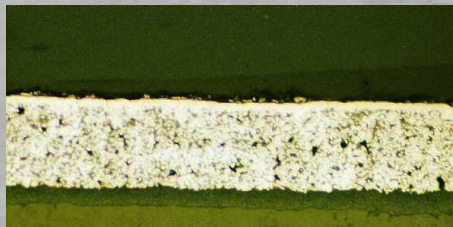
- Metals**
- Semiconductors**
- Glass**
- Ceramics**
- Minerals**
- Composites**
- Soft Metals**
- Plastics**
- Refractory Metals**
- General metals**



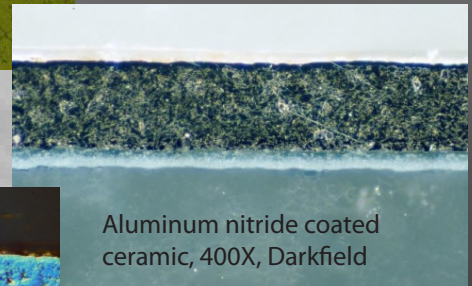
IM-5000 Inverted Metallurgical Microscope

- Brightfield illumination
- Darkfield illumination
- Polarized light illumination
- Differential interference contrast

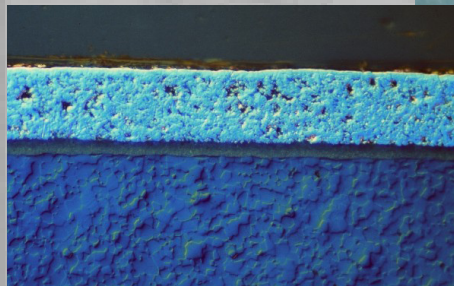
The IM-5000 inverted metallurgical microscope features bright-field, dark-field, polarized light and differential interference contrast (DIC) illumination, binocular eyepiece tubes and a digital camera port. The IM-5000 inverted microscope is an excellent choice for a multipurpose economical metallurgical microscope. Objectives range from 0.5X, 10X, 20X, 50X and 100X with wide field 10X, 15X, 20X eyepieces.



Aluminum nitride coated ceramic, 400X, Brightfield



Aluminum nitride coated ceramic, 400X, Darkfield



Aluminum nitride coated ceramic, 400X, Differential Interference Contrast (DIC)

Technical Specifications:

Feature	Specification
Eyepiece	Wide field WF10X (field no. 22mm)
Objectives	PL L5X/0.12 BD (working distance 10 mm) PL L10X/0.25 BD (working distance 10 mm) PL L20X/0.40 BD (working distance 5 mm) PL L50/0.70 BD (working distance 1.3 mm) PL L100X/0.90 BD (working distance 0.70 mm)
Mechanical stage	Travel range: 40x40 mm Size: 226x178 mm
Focus system	Coaxial coars/fine focus (2 micron) Travel (stage to focal plane) up 1 mm, down 7 mm
Power Supply	110 / 220V
Illumination	12V/50W Halogen Lamp
Dimensions (WxDxH)	12" x 16" x 26" (305 mm x 400 mm x 6350 mm)

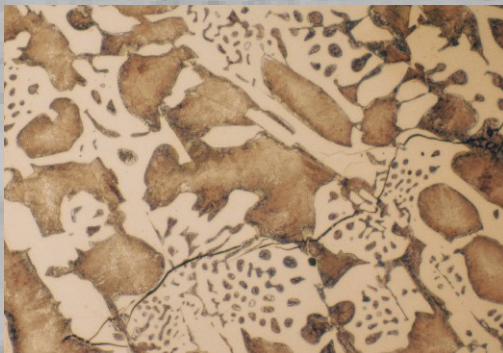
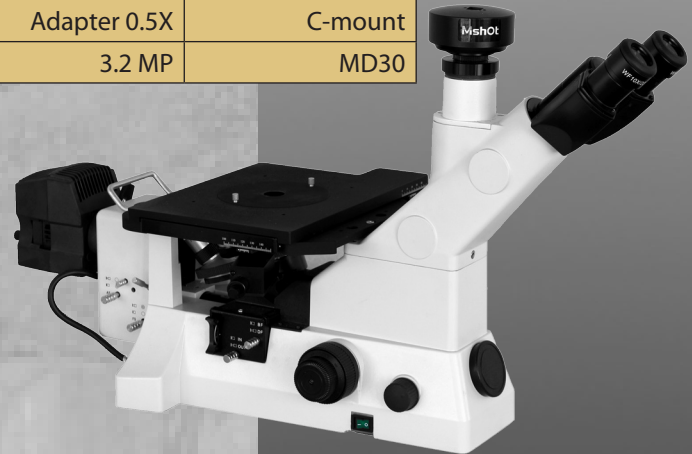
PACE TECHNOLOGIES

PACE Technologies
3601 E. 34th St
Tucson, AZ 85713 USA
Phone 520-882-6598
FAX 520-882-6599
www.metallographic.com
email pace@metallographic.com

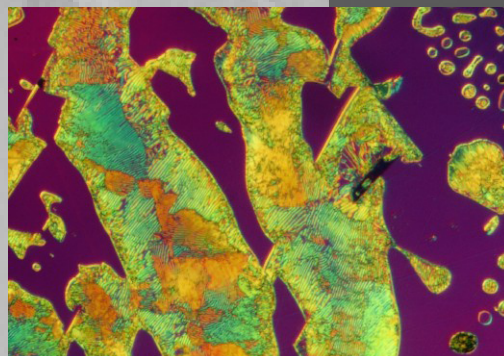


Accessories

Description	Specification	Part Number
Eyepieces	Wide field WF 15X (field no. 16 mm)	431-525
	Wide field WF 20X (field no. 12 mm)	431-535
C-mount Adapter	Adapter 0.5X	C-mount
USB CMOS Digital Camera	3.2 MP	MD30



White iron, etch 2% Nital, 400X (BF)



White iron, etch 2% Nital, 1000X (DIC)