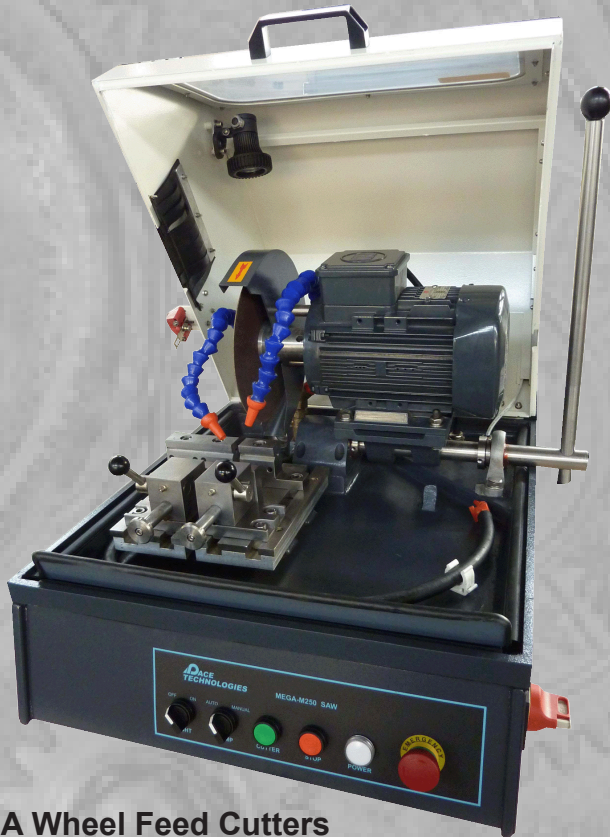


PACE **TECHNOLOGIES**

MEGA-M250 Abrasive Cutter

**MEGA-M250
10-inch Abrasive Saw**



Applications:
-Ferrous metals
-Non-ferrous metals

-Foundry castings
-Power metallurgy
-Heat treated parts
-Specialty alloys
-Wrought metals

MEGA Wheel Feed Cutters

- Highly reproducible
- Easy to use
- User friendly
- Robust and durable design
- Low cost
- Easy to service

Benefits

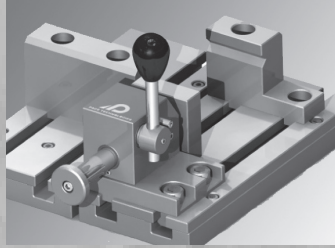
- Wheel feed controlled cutting
- Cutting capacity up to 3 inches (75 mm) solid stock sample using 10-inch (250 mm) blade
- High leverage handle for better control
- Powerful 3.5 hp motor
- Twin t-slotted stainless steel table
- Electronic braking system

Manual Cutting

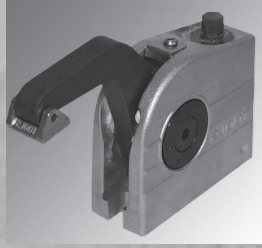
- The MEGA-M250 abrasive saw is a manual wheel feed cutter.



Clamping Systems for MEGA-M250 Cut-off Machines



Fast Cam Locking Vice



Vertical Clamping Vice

Clamping Devices

Proper clamping or fixturing is required to prevent blade breakage and to optimize the cut. Vises range from a vertical clamping vise to fast cam locking devices.

Fast cam locking vise, right	Fast cam locking vise, left	Vertical clamping vise	65 mm (2.6-in) height adapter for Vertical vise	Adjustable mechanical stop
QCR-1000	QCL-1000	MG-01	MG-H	MG-0150

Abrasive Cutting Fluids

Pace Product Name	Catalog Number	Packaging
MAXCUT Abrasive Cutting Fluid	MAXCUT-1000-32	32 oz
MAXCUT Abrasive Cutting Fluid	MAXCUT-1000-128	1 gallon
MAXCUT 2 Abrasive Cutting Fluid	MAXCUT2-1000-32	32 oz
MAXCUT 2 Abrasive Cutting Fluid	MAXCUT2-1000-128	1 gallon

10-inch MAXCUT Abrasive Blades (32 mm) 1.25" Arbor

Pace Product Name	Catalog Number	Packaging
Soft non-ferrous metals (aluminum, tin, copper, zinc, etc.)	MAX-E250	10
Hard non-ferrous metals	MAX-C250	10
Soft steels	MAX-E250	10
Case hardened steels	MAX-D250	10
Nickel, steel, titanium	MAX-D250-RT	10
Hard Steels	MAX-D250	10
Universal Thin Blade	MAX-A250	10
General Purpose Blade	MAX-I250	10



PACE TECHNOLOGIES

3601 E. 34th St.
Tucson, AZ 85713 USA
Phone 520-882-6598
FAX 520-882-6599
www.metallographic.com
email pace@metallographic.com

Technical Data

Specification	MEGA-M250
Cut-off size (Max diameter)	10 (250 mm)
Cutting Capacity	Max dia. 3"
Wheel Feed	Manual
Table Dimensions	8.3" x 9.3"
Cooling Unit	16 gallons
Motor Power	3.5 hp
Electrical Specifications	220, 380, 440, 480V 50/60 Hz (3 phase)
Model Type	Bench
Weight (lbs)	280

