

MEGA-M300 Abrasive Cutter



PACE TECHNOLOGIES

**Easy to Use
Economical
Powerful
Reliable
Robust**

Cutting Applications:
-Metals
-Ceramics
-Polymers
-Composites
-Aerospace
-Electronics
-Biomaterials



12-inch (300 mm) Wheel Feed Cutter

- Highly reproducibility
- Easy to use
- Flexible
- Ideal for all materials
- User friendly

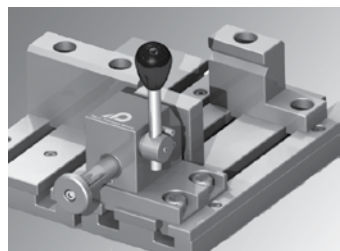
Features:

1. Chop cut
2. Balanced motor for ease of cutting
3. Aligned for square cutting
4. Easy to use clamping fixtures
5. T-slot table

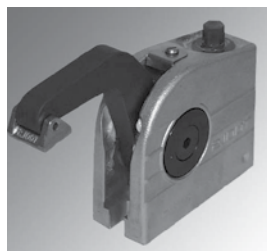
6. 220, 440, 480 volt 3-phase
7. Emergency shut off switch
8. Large drain with screen
9. Easy sample retrieval
10. Flexible coolant hoses, coolant in the shroud
11. Large cutting window
12. High torque motor (4 hp)
13. 10-inch and 12-inch blade capacity
14. Counter current coolant flow tank



Clamping Systems for MEGA-M300 Cut-off Machines



Fast Cam Locking Vise



Vertical Clamping Vise

Clamping Devices

Proper clamping or fixturing is required to prevent blade breakage and to optimize the cut. Vises range from a vertical clamping vise to fast cam locking devices.

Fast cam locking vise, right	Fast cam locking vise, left	Vertical clamping vise	Adjustable mechanical stop
QCR-1000	QCL-1000	15 01	GR 0150

Abrasive Cutting Fluids

Pace Product Name	Catalog Number	Packaging
MAXCUT Abrasive Cutting Fluid	MAXCUT-1000-32	32 oz
MAXCUT Abrasive Cutting Fluid	MAXCUT-1000-128	1 gallon
MAXCUT 2 Abrasive Cutting Fluid	MAXCUT2-1000-32	32 oz
MAXCUT 2 Abrasive Cutting Fluid	MAXCUT2-1000-128	1 gallon

10-inch MAXCUT Abrasive Blades (32 mm) 1.25" Arbor

Pace Product Name	Catalog Number	Packaging
Soft non-ferrous metals (aluminum, tin, copper, zinc, etc.)	MAX-E250	10
Hard non-ferrous metals	MAX-C250	10
Soft steels	MAX-E250	10
Case hardened steels	MAX-D250	10
Nickel, steel, titanium	MAX-D250-RT	10
Hard Steels	MAX-D250	10
Universal Thin Blade	MAX-A250	10
General Purpose Blade	MAX-I250	10

12-inch MAXCUT Abrasive Blades (32 mm) 1.25" Arbor

Pace Product Name	Catalog Number	Packaging
Soft non-ferrous metals (aluminum, tin, copper, zinc, etc.)	MAX-E300	10
Hard non-ferrous metals	MAX-C300	10
Soft steels	MAX-E300	10
Case hardened steels	MAX-D300	10
Nickel, steel, titanium	MAX-D300-RT	10
Hard Steels	MAX-D300	10
Universal Thin Blade	MAX-A300	10
General Purpose Blade	MAX-I300	10



PACE TECHNOLOGIES

3601 E. 34th St.
Tucson, AZ 85713 USA
Phone 520-882-6598
FAX 520-882-6599
www.metallographic.com
email pace@metallographic.com

Technical Data

Specification	MEGA-M300
Cut-off size (Max diameter)	10 or 12-inch (250-300 mm)
Cutting Capacity	Max dia. 3.5" or 2.7" x 7.5"
Wheel Feed	Manual
Table Dimensions	10.4" x 8.3"
Cooling Unit	20 gallons
Motor Power	4 hp
Electrical Specifications	220V, 380V, 440V 50/60 Hz (3 phase)
Model Type	Bench
Weight (lbs)	300

