

PACE **TECHNOLOGIES**

MEGA-T400 **Abrasive** **Cutter**

Applications:

- Ferrous metals**
- Non-ferrous metals**

- Foundry castings**
- Power metallurgy**
- Heat treated parts**
- Specialty alloys**
- Wrought metals**

MEGA-T400
14-16 inch Abrasive

MEGA Wheel Feed Cutters

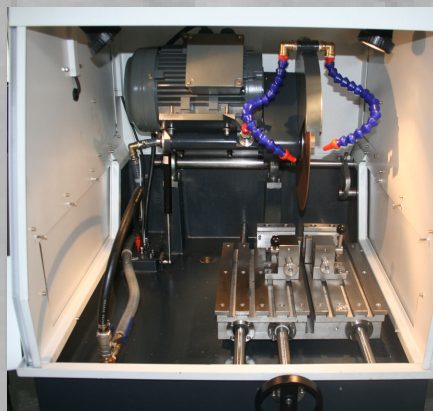
- Highly reproducible
- Easy to use
- User friendly
- Robust and durable design
- Low cost
- Easy to service

Benefits

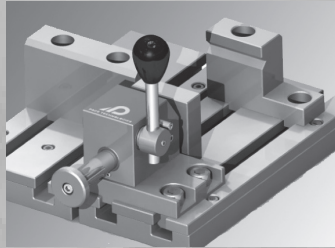
- Wheel feed controlled cutting
- Cutting capacity up to 6 inches (150 mm) solid stock sample using 14-inch (350 mm) or 16-inch (400 mm) blade
- Powerful 7.5 hp motor
- Twin t-slotted stainless steel table
- Electronic braking system

Manual Cutting

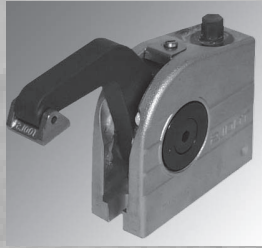
- The MEGA-T400 abrasive saw is a manual wheel feed cutter. This allows for the samples to be positioned in the x,y and z-axis positions.



Clamping Systems for MEGA-T400 Cut-off Machines



Fast Cam Locking Vice



Vertical Clamping Vice

Clamping Devices

Proper clamping or fixturing is required to prevent blade breakage and to optimize the cut. Vises range from a vertical clamping vise to fast cam locking devices.

Fast cam locking vise, right	Fast cam locking vise, left	Vertical clamping vise	65 mm (2.6-in) height adapter for Vertical vise	Adjustable mechanical stop
LCR-1000	LCL-1000	MG15- 01	MG-H	MG-0150

Abrasive Cutting Fluids

Pace Product Name	Catalog Number	Packaging
MAXCUT Abrasive Cutting Fluid	MAXCUT-1000-32	32 oz
MAXCUT Abrasive Cutting Fluid	MAXCUT-1000-128	1 gallon
MAXCUT 2 Abrasive Cutting Fluid	MAXCUT2-1000-32	32 oz
MAXCUT 2 Abrasive Cutting Fluid	MAXCUT2-1000-128	1 gallon

16-inch MAXCUT Abrasive Blades (32 mm) 1.25" Arbor

Pace Product Name	Catalog Number	Packaging
Soft non-ferrous metals (aluminum, tin, copper, zinc, etc.)	MAX-E400	10
Hard non-ferrous metals	MAX-C400	10
Soft steels	MAX-E400	10
Case hardened steels	MAX-D400	10
Hard Steels	MAX-D400	10
Universal Thin Blade	MAX-A400	10
General Purpose Blade	MAX-I400	10



PACE TECHNOLOGIES

3601 E. 34th St.
Tucson, AZ 85713 USA
Phone 520-882-6598
FAX 520-882-6599
www.metallographic.com
email pace@metallographic.com

Technical Data

Specification	MEGA-T400
Cut-off size (Max diameter)	14 (350 mm) 16 (400 mm)
Cutting Capacity	Max dia. 6"
Wheel Feed	Manual
Table Feed	Manual
Table Dimensions	14.6" x 14.2" (370 x 360 mm)
Cooling Unit	16 gallons
Motor Power	7.5 hp
Electrical Specifications	220, 380, 400, 480V 50/60 Hz (3 phase)
Model Type	Floor
Weight (lbs)	700 (300 kg)
Dimensions (WxHxD)	50" x 39" x 63" (83" with hood open) 127cmx100cmx160cm (210cm with hood open)

