

PACE **TECHNOLOGIES**

DIGITAL ROCKWELL HARDNESS TESTER HR-15C)

- Semi-automated
- Load 60, 100 and 150 Kgr
- Scales (HRA, HRB, HRC, HRD, HRF, HV, HK, HBW, HR15N, HR30N, HR45N, HR15T, HR30T and HR45T)
- Dwell time 1-60 seconds
- Auto hardness conversion
- Conforms to ASTM E-18
- Easy to use
- LED speed display
- User friendly
- Robust and durable design
- Low cost
- Easy to service

DIGITAL DUAL SUPERFICIAL / ROCKWELL HARDNESS TESTER HR-145)

- Semi-automated
- Load 15, 30 and 40 Kgr (Superficial Rockwell)
- Load 60, 100 and 150 Kgr (Rockwell)
- Scales (HRA, HRB, HRC, HRD, HRF, HV, HK, HBW, HR15N, HR30N, HR45N, HR15T, HR30T and HR45T)
- Dwell time 1-60 seconds
- Auto hardness conversion
- Conforms to ASTM E-18
- Easy to use
- LED speed display
- User friendly
- Robust and durable design
- Low cost
- Easy to service

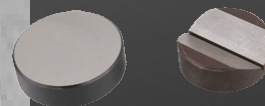
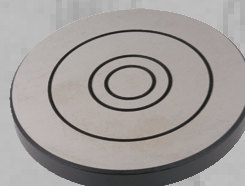
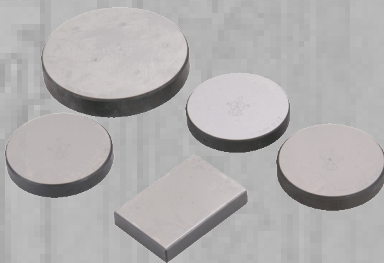


Dual Superficial Rockwell /
Rockwell tester

Rockwell Hardness Testers



Rockwell tester



Technical Specifications:

Feature	HR-15C Rockwell Specification
Rockwell scales	HRA, HRB, HRC, HRD HRF, HV, HK, HBW, HR15N, HR30N, HR45N, HR15T, HR30T, HT45T
Preliminary test force	10 Kgr (98.07N)
Full test force	60 Kgf, 100 Kgr, 150 Kgf
Hardness resolution	0.1 HR
Dwell time	Adjustable 1-60 seconds
Auto Hardness conversion	HRA, HRB, HRC, HRF, HV, HK, HBW, HT15N, HR30N, HR45N, HR15T, HR30T, HR45T
Instrument throat height	165 mm
Dimensions W x H x D	8.5" x 21" x 28" (215x520x700mm)
Weight	200 lbs (90 kg)
Accuracy	Conforms to ASTM E-18

Feature	HR-145 Rockwell Specification
Rockwell scales	HRA, HRB, HRC, HRD HRF, HV, HK, HBW, HR15N, HR30N, HR45N, HR15T, HR30T, HT45T
Preliminary test force	3 Kgr (Superficial) 10 Kgr (Rockwell)
Full test force	15 Kgf, 30 Kgr, 45 Kgf (Superficial) 60 Kgf, 100 Kgr, 150 Kgf (Rockwell)
Hardness resolution	0.1 HR
Dwell time	Adjustable 1-60 seconds
Auto Hardness conversion	HRA, HRB, HRC, HRF, HV, HK, HBW, HT15N, HR30N, HR45N, HR15T, HR30T, HR45T
Instrument throat height	165 mm
Dimensions W x H x D	8.5" x 21" x 28" (215x520x700mm)
Weight	200 lbs (90 kg)

Mini-pirnter	811-831
1/8-inch steel ball indenter	811-431
1/4-inch steel ball indenter	811-451
1/2-inch steel ball indenter	811-471
1/8-inch steel ball	811-441
1/4-inch steel ball	811-461
1/2-inch steel ball	811-481
Fuses	811-811
Cone diamond indenter	811-401
55 mm anvil	811-511
55 mm V-shpaed anvil	811-521
100 mm flat anvil	811-531
150 mm flat anvil	811-541
Small flat anvil	811-501

PACE **TECHNOLOGIES**

PACE Technologies
3601 E. 34th St
Tucson, AZ 85713 USA
Phone 520-882-6598
FAX 520-882-6599
www.metallographic.com
email pace@metallographic.com

