

PACE **TECHNOLOGIES**

ZMS0745T Stereo Metallurgical Microscope

Applications:

- Metals**
- Semiconductors**
- Glass**
- Ceramics**
- Minerals**
- Composites**
- Soft Metals**
- Plastics**
- Refractory Metals**
- General metals**

ZMS0745T Metallurgical Stereo Microscope

The ZMS0745T trinocular stereo microscope has an optical design for enhancing reproduction and true color imaging of the image.

The ZMS0745T stereo microscope has a magnification range of 7X to approximately 45X and is ideal for low magnification documentation of the metallographic specimen prior to polishing and grinding. It is also very useful for measuring cracks, weld penetration depth and other topographical features.



Stereo microscope image of filler metal in a steel weld

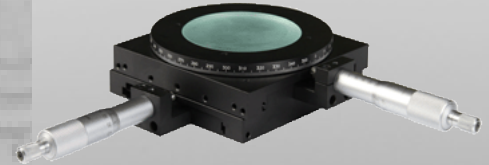


Technical Specifications:

Feature	Specification
Total magnification	7X ~ 45X
Eyepieces	SWH10X
Zoom objective magnification	0.7X ~ 4.5X
Working distance	4.6" (118 mm)
Trinocular eyetubes	Inclined 45 degrees from main body (360 degree rotation)
Diopter adjustment	+/- 6 degrees
Interpupillary adjustment	2" ~3" (52 ~ 76 mm)
Focus range	100 mm (50 mm post)
Stage size	3" (76 mm)
Distance from post to center of focus	5" (125 mm)

PACE **TECHNOLOGIES**

PACE Technologies
3601 E. 34th St
Tucson, AZ 85713 USA
Phone 520-882-6598
FAX 520-882-6599
www.metallographic.com
email pace@metallographic.com



Stage with X-Y micrometers

Accessories

Description	Specification	Part Number
Eyepieces	SWH10X/23mm eyepiece	416-101
	SWH15X/17mm eyepiece	416-121
	SWH20X/14mm eyepiece	416-131
CCD Adapter	CCD Adapter 0.5X	431-725
	CCD Adapter 1X	431-715
CCD Camera	CCD Camera MC2 (CS-mount)	484-132
	Capture card	527-131
	1X stage micrometer CCD adapter	417-241
USB CMOS Camera	1.3 MP	485-215
	3.2 MP	485-225
	5.2 MP	485-235
Light sources	4-Division LED Lightsource (ML-144D)	413-136
	Fiber optic light source (150 W)	413-227
Stage	Mechanical stage with X-Y micrometer precision	419-143



CCD camera
micrometer
adapter



LED Illuminator ML-144D



Fiber Optic Illuminator)

