

PACE[®] **TECHNOLOGIES**

www.metallographic.com

Dual Superficial Rockwell Fully Automated
Hardness Tester (OMEGA-AUTO-RST)

OMEGA-AUTO-RST is an automated dual digital Rockwell / Superficial Rockwell hardness tester. The OMEGA-AUTO-RST hardness testers are designed to evaluate metallographic specimen Superficial and/or Rockwell hardness.

- Fully-automated
- 15 Kgf, 30 Kgf and 45 Kgf loading (Superficial)
- 60 Kgf, 100 Kgf and 150 Kgf loading (Rockwell)
- One touch operation
- Auto load change
- Auto lifting
- Auto loading
- Auto measuring
- Auto conversion
- Data transmission
- Color touch screen
- Ability to set upper and lower limits
- Stores up to 2000 single test results, 1000 group test results
- Optional data analysis software and Bluetooth receiver to input and analyze data
- Supports FexQMS data analysis and control software

Technical Specifications:

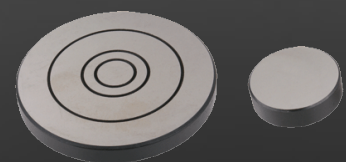
Feature	OMEGA-AUTO-RST Specification
Rockwell scales	HRA, HRB, HRC, HRD, HRE, HRF, HRG, HRH, HRK, HRL, HRM, HRR, HRP, HRS, HRV
Preliminary test force	3 Kgr (29.4N) 10 Kgr (98.1N)
Superficial Rockwell load	15 Kgf, 30 Kgr, 45 Kgf
Rockwell load	60 Kgf, 100 Kgr, 150 Kgf
Hardness resolution	0.1 HR
Dwell time	Adjustable 1-60 seconds
Auto Hardness conversion	HRC, HV, HBS, HBW, HK, HRA, HRD, HR15N, HR30N, HR45N, HS, HRF, HR15T, HR30T, HR45T, HRB
Max Height of Specimen	11 inches (280 mm)
Dimensions (W x D x H)	9 x 24 x 34.8 inches (225 x 615 x 885 mm)
Weight	275.6 lbs (125 kg)
Accuracy	Conforms to ASTM E-18

Dual Automated Superficial & Rockwell Hardness Testers

PACE Technologies
3601 E. 34th St
Tucson, AZ 85713 USA
Phone +1 520-882-6598
FAX +1 520-882-6599
www.metallographic.com
email pace@metallographic.com



Automated Dual
Rockwell / Superficial
Rockwell hardness tester



Rockwell Hardness Tester Accessories

1/8-inch steel ball indenter	811-431
1/4-inch steel ball indenter	811-451
1/2-inch steel ball indenter	811-471
1/8-inch steel ball	811-441
1/4-inch steel ball	811-461
1/2-inch steel ball	811-481
Fuses	811-811
Cone diamond indenter	811-401
55 mm anvil	811-511
55 mm V-shpaed anvil	811-521
100 mm flat anvil	811-531
150 mm flat anvil	811-541
Small flat anvil	811-501

PACE[®]
TECHNOLOGIES
www.metallographic.com

3601 E. 34th St.
Tucson, AZ 85713 USA
Phone +1 520-882-6598
FAX +1 520-882-6599
www.metallographic.com
email pace@metallographic.com

