

PACE[®] **TECHNOLOGIES**

www.metallographic.com

Superficial Rockwell Fully Automated Hardness Tester (OMEGA AUTO-ST)

OMEGA AUTO-ST is an automated digital Superficial Rockwell hardness tester. The OMEGA AUTO-ST hardness testers are designed to evaluate metallographic specimen Superficial Rockwell hardness.

- Fully-automated
- 15 Kgf, 30 Kgf and 45 Kgf loading
- One touch operation
- Auto load change
- Auto lifting
- Auto loading
- Auto measuring
- Auto conversion
- Data transmission
- Color touch screen
- Ability to set upper and lower limits
- Stores up to 2000 single test results, 1000 group test results
- Optional data analysis software and Bluetooth receiver to input and analyze data
- Supports FexQMS data analysis and control software
- Easy to use
- User friendly

Technical Specifications:

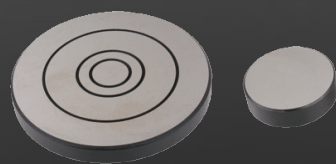
Feature	OMEGA-AUTO-ST Specification
Rockwell scales	HRA, HRB,HRC,HRD,HRE, HRF, HRG,HRH,HRK,HRL, HRM, HRR, HRP, HRS,HRV
Preliminary test force	3 Kgr (29.4N)
Full test force	15 Kgf, 30 Kgr, 45 Kgf
Hardness resolution	0.1 HR
Dwell time	Adjustable 1-60 seconds
Auto Hardness conversion	HRC, HV, HBS, HBW, HK, HRA, HRD, HR15N, HR30N, HR45N, HS, HRF, HR15T, HR30T, HR45T, HRB
Max Height of Specimen	11 inches (280 mm)
Dimensions (W x D x H)	9 x 24 x 34.8 inches (225 x 615 x 885 mm)
Weight	275.6 lbs (125 kg)
Accuracy	Conforms to ASTM E-18

Automated Superficial Rockwell Hardness Testers

PACE Technologies
3601 E. 34th St
Tucson, AZ 85713 USA
Phone +1 520-882-6598
FAX +1 520-882-6599
www.metallographic.com
email *pace@metallographic.com*



Automated Superficial Rockwell hardness tester



Rockwell Hardness Tester Accessories

1/8-inch steel ball indenter	811-431
1/4-inch steel ball indenter	811-451
1/2-inch steel ball indenter	811-471
1/8-inch steel ball	811-441
1/4-inch steel ball	811-461
1/2-inch steel ball	811-481
Fuses	811-811
Cone diamond indenter	811-401
55 mm anvil	811-511
55 mm V-shpaed anvil	811-521
100 mm flat anvil	811-531
150 mm flat anvil	811-541
Small flat anvil	811-501

PACE[®]
TECHNOLOGIES
www.metallographic.com

3601 E. 34th St.
Tucson, AZ 85713 USA
Phone +1 520-882-6598
FAX +1 520-882-6599
www.metallographic.com
email pace@metallographic.com

