

# **PACE<sup>®</sup>** **TECHNOLOGIES**

*www.metallographic.com*

## **Rockwell Semi-Automated Hardness Tester (OMEGA DIGI-RT)**

OMEGA DIGI-RT is a semi-automated digital Rockwell hardness tester. The OMEGA DIGI hardness testers are designed to evaluate metallographic specimen Rockwell hardness.

- **Semi-automated**
- **60 Kgf, 100 Kgf and 150 Kgf loading**
- **Color touch screen that displays loading force, indenter type, dwell time and conversion scale**
- **Motorized control of loading, dwell, and unloading**
- **Built-in microprocessor that automatically computes maximum, minimum, mean and deviation values**
- **Resolution 0.1 HR**
- **Automatic conversion**
- **Store up to 2000 single testing results and 1000 group results for review and analysis**
- **LCD displays hardness**
- **Robust and durable design**
- **Loading time and dwell time (1-60 seconds)**
- **Includes a RS232 data output**
- **Low cost**

### **Technical Specifications:**

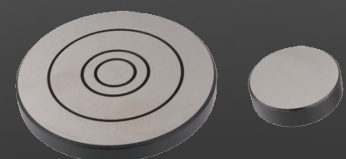
<b>Feature</b>	<b>OMEGA-DIGI-RT Specification</b>
Rockwell scales	HRA, HRB,HRC,HRD,HRE, HRF, HRG,HRH,HRK,HRL, HRM, HRR, HRP, HRS,HRV
Preliminary test force	10 Kgr (98.07N)
Full test force	60 Kgf, 100 Kgr, 150 Kgf
Hardness resolution	0.1 HR
Dwell time	Adjustable 1-60 seconds
Auto Hardness conversion	HRC, HV, HBS, HBW, HK, HRA, HRD, HR15N, HR30N, HR45N, HS, HRF, HR15T, HR30T, HR45T, HRB
Max Height of Specimen	6.9 inches (175 mm)
Dimensions (W x D x H)	7 x 21.5 x 30 inches (182 x 546 x 755 mm)
Weight	198 lbs (90 kg)
Accuracy	Conforms to ASTM E-18

# **Rockwell Hardness Tester**

*PACE Technologies*  
3601 E. 34th St  
Tucson, AZ 85713 USA  
Phone +1 520-882-6598  
FAX +1 520-882-6599  
*www.metallographic.com*  
email *pace@metallographic.com*



**Semi-Automated Rockwell  
hardness tester**



## Rockwell Hardness Tester Accessories

1/8-inch steel ball indenter	811-431
1/4-inch steel ball indenter	811-451
1/2-inch steel ball indenter	811-471
1/8-inch steel ball	811-441
1/4-inch steel ball	811-461
1/2-inch steel ball	811-481
Fuses	811-811
Cone diamond indenter	811-401
55 mm anvil	811-511
55 mm V-shpaed anvil	811-521
100 mm flat anvil	811-531
150 mm flat anvil	811-541
Small flat anvil	811-501

**PACE<sup>®</sup>**  
**TECHNOLOGIES**  
[www.metallographic.com](http://www.metallographic.com)

3601 E. 34th St.  
Tucson, AZ 85713 USA  
Phone +1 520-882-6598  
FAX +1 520-882-6599  
[www.metallographic.com](http://www.metallographic.com)  
email [pace@metallographic.com](mailto:pace@metallographic.com)

