


Example: Coating Thickness - Pseudo Color Method

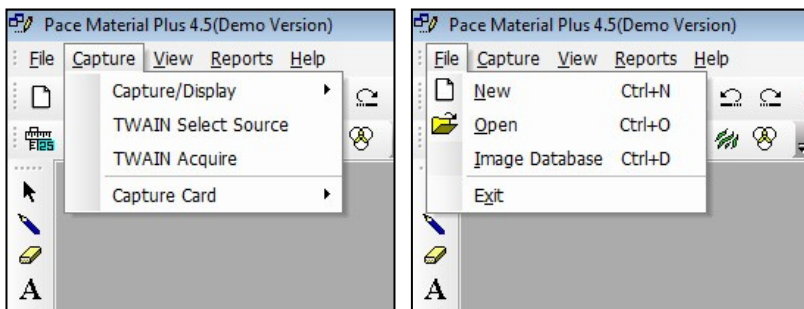
The Coating Thickness – Pseudo color method quickly measures the thickness or width of a sample coating at multiple locations. Compared with conventional manual techniques, this module provides a significant improvement. Not only does it have greater sample throughput, it also increases measurement repeatability. The results are presented by mean, minimum and maximum widths.

PROCEDURE:

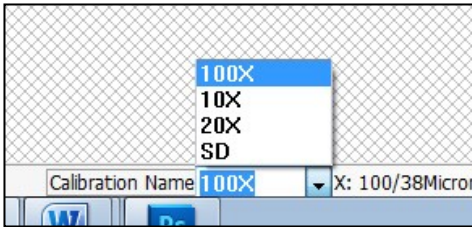
1. Load the coating thickness image for analysis.
2. Select the appropriate saved calibration scales from the drop down list at the bottom of the Window
3. Click on the Coating Thickness icon  either from the Toolbar or from the Menu-bar
4. Open Pseudo Color Method tag.
5. Choose either HORIZONTAL or VERTICAL line as per image position.
6. Click on SELECT
7. A set Range dialogue box will appear with two cursors. Move these cursors until the desired thickness is detected.
8. Click on OK.
9. Click on ADD to place data into grid.
10. To save the report, click on REPORT.
11. A sample information window will appear. Fill the required information. Click on “Save Data For Report Tool”
12. 12. Click on “TO EXCEL” to see the result in Excel.

EXAMPLE of Coating Analysis – Pseudo Color Method

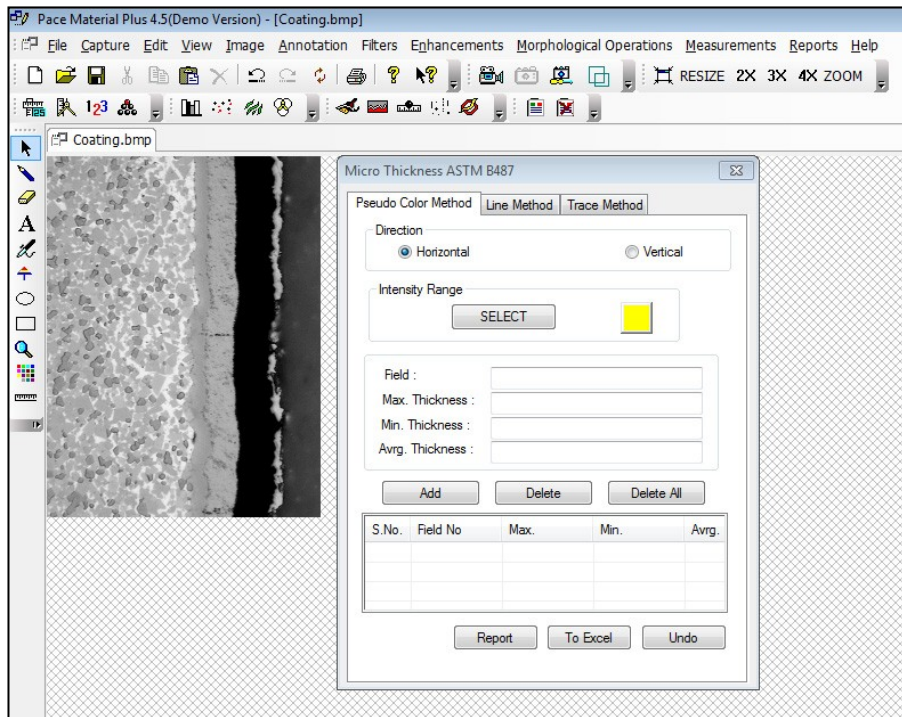
File > Open (select image) or Capture > TWAIN Acquire (for live image)



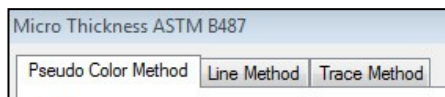
2. Select Calibration scale at bottom of the Window



3. Click on the Coating Thickness icon  either from the Toolbar or from the Menu-bar



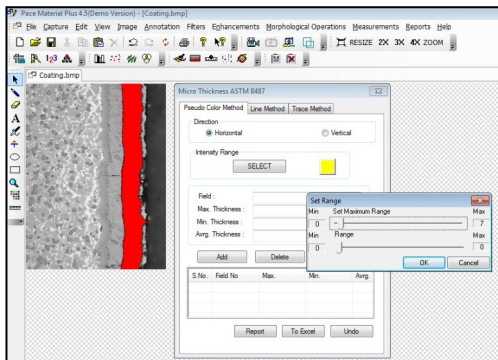
4. Open Pseudo Color Method tag.



5. Choose either HORIZONTAL or VERTICAL line as per image position. The analysis lines will be drawn in the direction selected.



6. Click on SELECT
7. A set Range dialogue box will appear with two cursors. Move these cursors until the desired thickness is detected.



8. Click on OK.
9. Click on ADD to place data into grid.
10. To save the report, click on REPORT.
11. A sample information window will appear. Fill the required information. Click on "Save Data For Report Tool"
12. Click on "TO EXCEL" to see the result in Excel.

