


Example: Grain Size Analysis - Manual Method

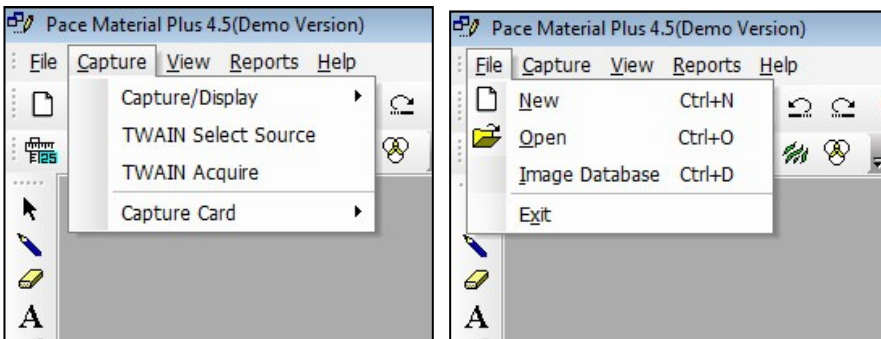
Individual grain size can be determined by tracing the outline of a specific grain.

PROCEDURE:

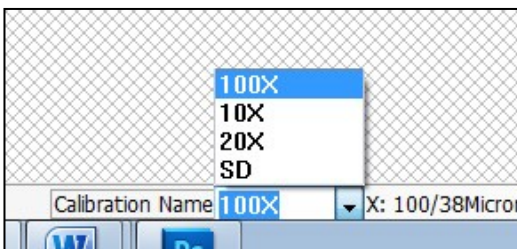
1. Load the image for grain size measurement.
2. Select the appropriate saved calibration scales from the drop down list at the bottom of the Window
3. Click on the Grain Size icon  either from the Toolbar or from the Menu-bar
4. Grain Size Measurement dialogue box will open. Select Manual method.
5. To find the grain size for an individual grain, first click and drag a line on the boundary of the grain with the mouse. The moment the mouse is released, the line automatically joins to the starting point. The grain number is automatically calculated.
6. To add data click on ADD.
7. To save the report, click on REPORT
8. A sample information window will appear. Fill the required information. Click on “Save Data For Report Tool”
9. Click on “TO EXCEL” to see the result in Excel.

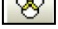
EXAMPLE of Grain Size – Manual Method

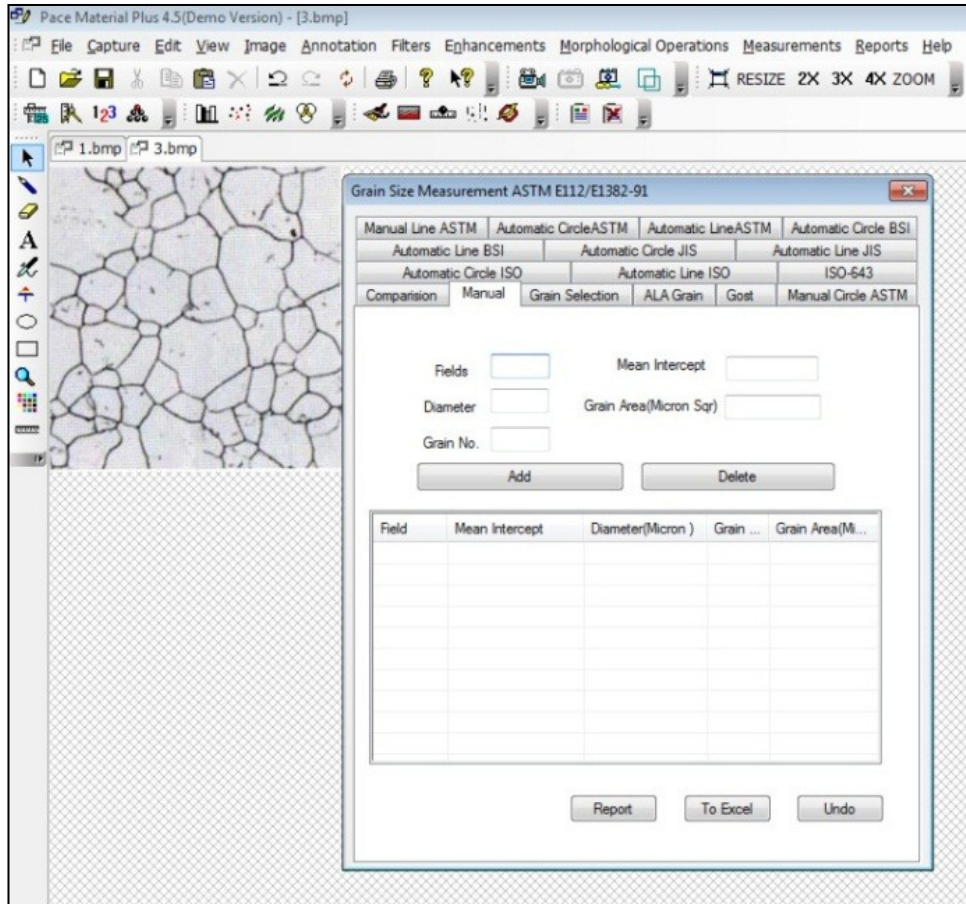
1. File > Open (select image) or Capture > TWAIN Acquire (for live image)



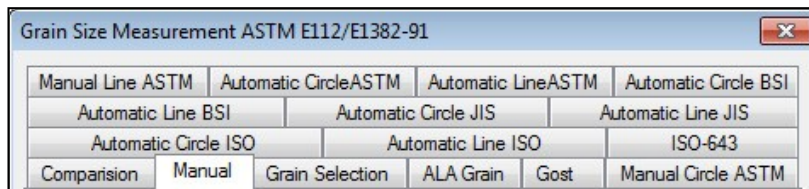
2. Select Calibration scale at bottom of the Window



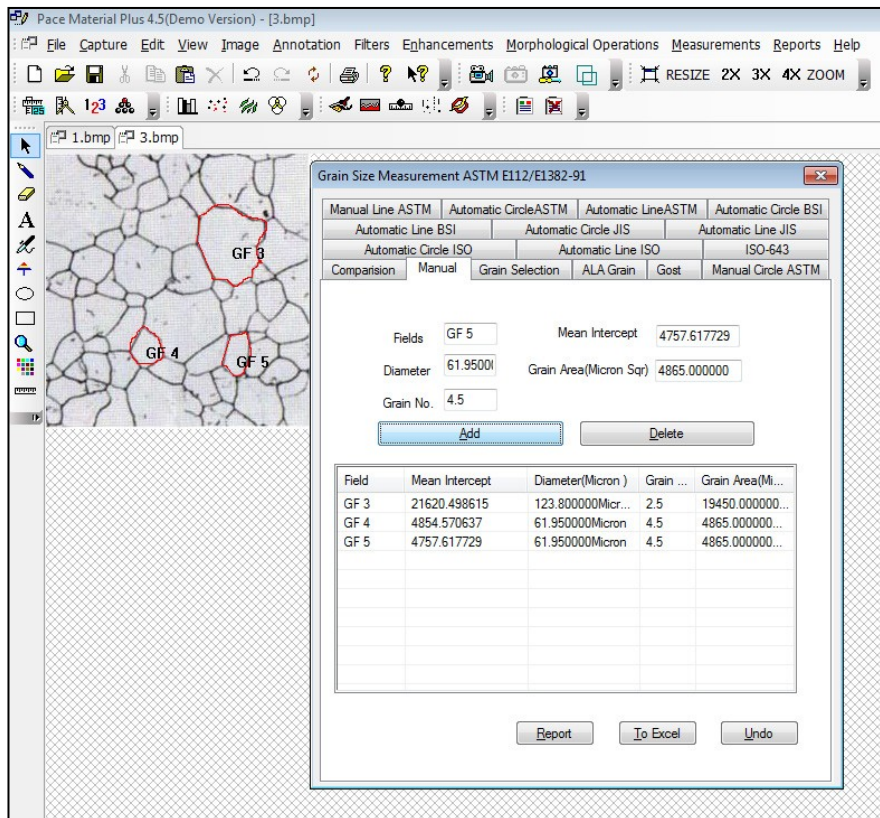
3. Click on the Grain Size icon  either from the Toolbar or from the Menu-bar



4. Grain Size Measurement dialog box will open. Select Manual method.



5. To find the grain size for an individual grain, first click and drag a line on the boundary of the grain with the mouse. The moment the mouse is released, the line automatically joins to the starting point. The grain number is automatically calculated.



6. To add data click on ADD.
7. To save the report, click on REPORT
8. A sample information window will appear. Fill the required information. Click on “Save Data For Report Tool”
9. Click on “TO EXCEL” to see the result in Excel.

Grainsize1 [Compatibility]

File Home Insert Page Layout Formulas Data Review View

Cut Copy Paste Format Painter Clipboard Font Alignment Number

Arial 10 Bold Italic Underline

Wrap Text Merge & Center

General

\$ % , .00 →.0

Cond Form

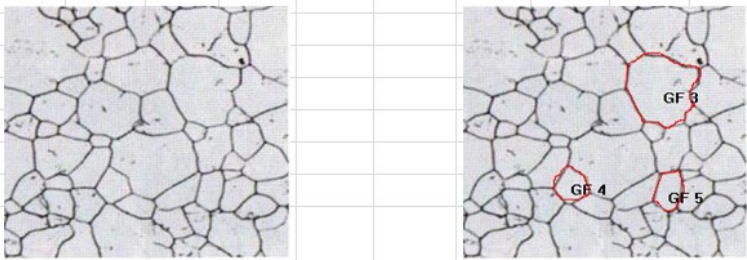
T12

MICROMEASUREMENT TEST REPORT

NAME : APPLICATION :

EVALUATION DATE : OPERATOR :

SAMPLE INFO ID : MICROSCOPE OBJ :



Field	Avg. Intercept No	Avg. Dia.(micron)	Avg Grain Area(micron)	Avg Grain No	Manual Grain Size	ASTM E512&E13
GF 3	21620.49882	123.800000	2.5	19450.000000		
GF 4	4854.570637	61.950000M icron	4.5	4865.000000		
GF 5	4757.617729	61.950000M icron	4.5	4865.000000		