

DACE[®] **TECHNOLOGIES**

www.metallographic.com

IM-3000B **Inverted** **Metallurgical** **Microscope**

Brightfield Illumination

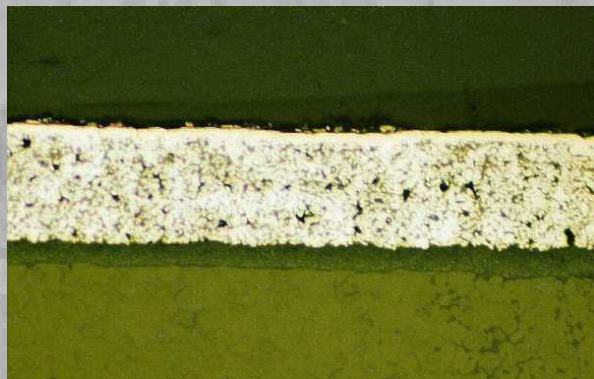
Applications:

- Metals
- Semiconductors
- Glass
- Ceramics
- Minerals
- Composites
- Soft Metals
- Plastics
- Refractory Metals
- General metals

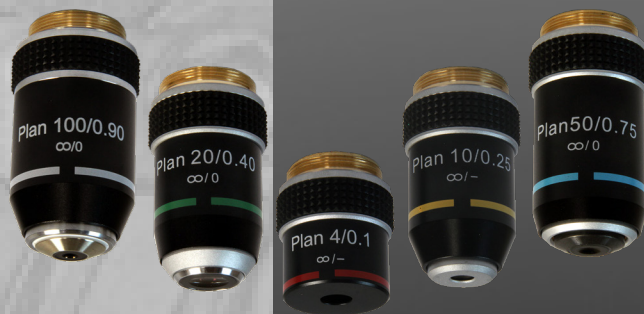
IM-3000B Inverted **Metallurgical Microscope**

- Brightfield illumination
- 5, 10, 20, 50X and 100X objectives
- Digital camera port
- Binocular eyepiece tubes

The IM-3000B inverted metallurgical microscope is a basic bright-field microscope (Part No. IM-3000B). The IM-3000B inverted microscope is an excellent choice for a multipurpose economical metallurgical microscope.



Aluminum nitride coated ceramic, 400X, Brightfield

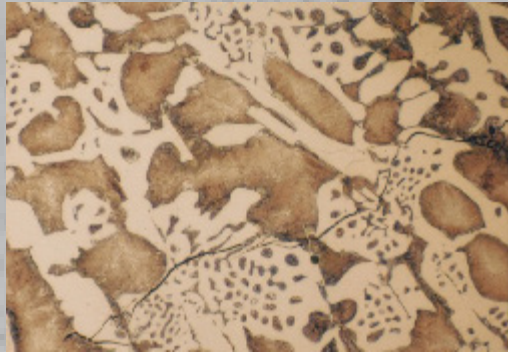


Technical Specifications:

Feature	Specification
Eyepieces	Wide field WF 10X (field no. 22 mm)
Objectives	Infinite Plan Achromatic 5X/0.1 Infinite Plan Achromatic 10X/0.25 Infinite Plan Achromatic 20X/0.4 Infinite Plan Achromatic 50X/0.6 Infinite Plan Achromatic 100X/0.9
Stage	X-Y stage Travel range: 1.6x1.6-inches (40 x 40 mm) Size: 8.9 x 7-inch (226x178 mm)
Focus system	Coaxial coars/fine focus
Power Supply	110 / 220V
Illumination	12V/50W Halogen Lamp
Color filters	Grey color filter Blue color filter Green color filter Ground glass

Accessories

Description	Specification	Part Number
C-mount Adapter	Adapter 1X	431-714
Digital Camera	3.1 MP (for stitching) 9MP digital camera w/ 1-inch sensor	CAM-31 CAM-91



White iron, etch 2% Nital, 400X (BF)



PACE[®]
TECHNOLOGIES
www.metallographic.com

PACE Technologies
3601 E. 34th St
Tucson, AZ 85713 USA
Phone +1-520-882-6598
FAX +1-520-882-6599
<https://www.metallographic.com>
email pace@metallographic.com