

DACE[®] **TECHNOLOGIES**

www.metallographic.com

IM-5000 Inverted Metallurgical Microscope

- Brightfield**
- Darkfield**
- Polarized Light**
- Differential Interference Contrast**

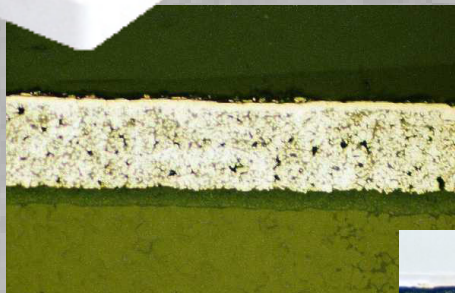


- Applications:**
- Metals**
 - Semiconductors**
 - Glass**
 - Ceramics**
 - Minerals**
 - Composites**
 - Soft Metals**
 - Plastics**
 - Refractory Metals**
 - General metals**

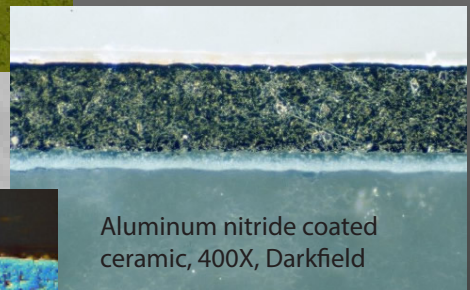
IM-5000 Inverted Metallurgical Microscope

- Brightfield illumination
- Darkfield illumination
- Polarized light illumination
- Differential interference contrast

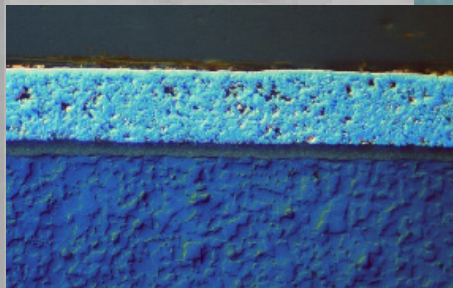
The IM-5000 inverted metallurgical microscope (Part No. IM-5000) features bright-field, dark field, polarized light and differential interference contrast (DIC) illumination, binocular eyepiece tubes and two digital camera ports. The IM-5000 inverted microscope is an excellent choice for a multipurpose economical metallurgical microscope.



Aluminum nitride coated ceramic, 400X, Brightfield



Aluminum nitride coated ceramic, 400X, Darkfield



Aluminum nitride coated ceramic, 400X, Differential Interference Contrast (DIC)

Technical Specifications:

Feature	Specification
Eyepiece	Wide field WF10X (field no. 22mm)
Objectives	PL L5X/0.12 BD (working distance 10 mm) PL L10X/0.25 BD (working distance 10 mm) PL L20X/0.40 BD (working distance 5 mm) PL L50/0.70 BD (working distance 1.3 mm) PL L100X/0.90 BD (working distance 0.70 mm)
Eyepiece Tube	Trinocular, 45 degree inclination ratio Observation: 80%, photo 20%
Focus System	Coaxial coarse/ fine focus (2 micron) Travel (stage to focal plane) up 1 mm, down 7 mm
Nosepiece	Quintuple
Mechanical stage	Travel range: 1.6x1.6-inches (40 x 40 mm) Size: 8.9 x 7-inch (226x178 mm)
Illumination	12V/50W Halogen Lamp
Power Supply	110V or 220V 50/60 Hz
Illumination	12V/50W Halogen Lamp
Dimensions (WxDxH)	12 x 16 x 26-inch (305 x 400 x 635 mm)
Color filters	Grey color filter Blue color filter Green color filter Ground glass
Part no.	IM-5000

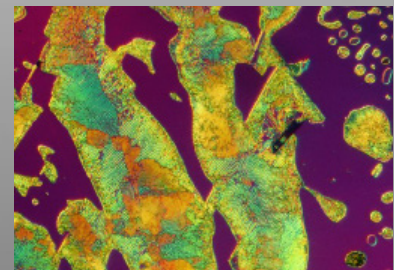
Accessories

Description	Specification	Part Number
Eyepieces	Wide field WF 15X (field no. 16 mm)	431-525
	Wide field WF 20X (field no. 12 mm)	431-535
C-mount Adapter	Adapter 0.5X	431-725
Digital Camera	3.1 MP (for stitching)	CAM-31
	9MP digital camera w/ 1-inch sensor	CAM-91

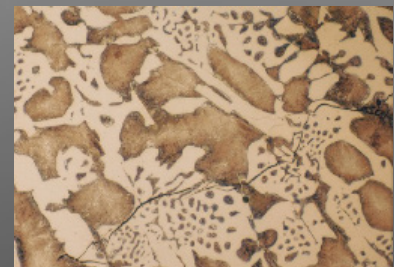


PACE[®]
TECHNOLOGIES
www.metallographic.com

PACE Technologies
3601 E. 34th St
Tucson, AZ 85713 USA
Phone +1 520-882-6598
FAX +1 520-882-6599
www.metallographic.com
email pace@metallographic.com



White iron, etch 2% Nital, 1000X (DIC)



White iron, etch 2% Nital, 400X (BF)