

# **DACE<sup>®</sup>** **TECHNOLOGIES**

*www.metallographic.com*

## **Applications:**

- Ferrous metals
- Hardened metals
- Non-ferrous metals

- Foundry castings
- Power metallurgy
- Heat treated parts
- Specialty alloys
- Wrought metals

## **MEGA Wheel and Table Feed Cutters**

- Highly reproducible
- Easy to use
- User friendly
- Robust and durable design
- Low cost
- Easy to service

## **Benefits**

- Wheel feed controlled cutting
- Cutting capacity up to 6 inches (150 mm) solid stock sample using 14-inch (350 mm) or 16-inch (400 mm) blade
- Powerful 7.5 hp (5.5 KW) motor
- Twin t-slotted stainless steel table
- Ammeter display with red warning light for motor overload
- Electronic braking system

## **Manual Cutting**

- The MEGA-T400 abrasive saw is a manual wheel and/or table feed cutter. This allows for the samples to be positioned in the x,y and z-axis positions.



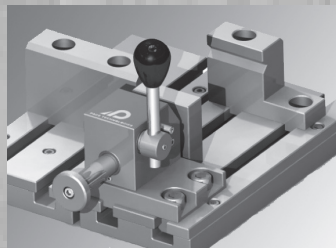
Machinery directive 2006/42/EC  
Low Voltage Directive 2006/95/EC  
Electromagnetic Compatibility directive 2004/108/EC

# **MEGA-T400** **Abrasive** **Cutter**

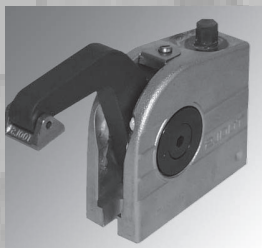
**MEGA-T400**  
**14-16 inch Abrasive**  
**Blade Saw**



## Clamping Systems for MEGA-T400 Cut-off Machines



Fast Cam Locking Vise



Vertical Clamping Vise

## Clamping Devices

Proper clamping or fixturing is required to prevent blade breakage and to optimize the cut. Vises range from a vertical clamping vise to fast cam locking devices.

Fast cam locking vise, right	Fast cam locking vise, left	Vertical clamping vise	65 mm (2.6-in) height adapter for Vertical vise	Adjustable mechanical stop
LCR-1000	LCL-1000	MG15- 01	MG-H	MG-0150

## Abrasive Cutting Fluids

Pace Product Name	Catalog Number	Packaging
MAXCUT Abrasive Cutting Fluid	MAXCUT-1000-128	1 gallon
MAXCUT Abrasive Cutting Fluid	MAXCUT-1000-5G	5 gallons
MAXCUT 2 Cutting Fluid with Anti-corrosion Additive	MAXCUT2-1000-128	1 gallon
MAXCUT 2 Cutting Fluid with Anti-corrosion Additive	MAXCUT2-1000-15G	5 gallons
MAXCUT OL1000 Water Soluble Emulsion Abrasive Cutting Fluid	MAXCUT-OL1000-128	1 gallon
MAXCUT OL1000 Water Soluble Emulsion Abrasive Cutting Fluid	MAXCUT-OL1000-5G	5 gallons

## 16-inch MAXCUT Abrasive Blades (32 mm) 1.25" Arbor

Pace Product Name	Catalog Number	Packaging
Soft non-ferrous metals (aluminum, tin, copper, zinc, etc.)	MAX-E400	10
Hard non-ferrous metals	MAX-C400	10
Soft steels	MAX-E400	10
Case hardened steels (requires slower speed motor)	MAX-VHS400	10
Hard Steels	MAX-VHS400	10
Universal Thin Blade	MAX-A400	10
General Purpose Blade	MAX-I400	10



**PACE<sup>®</sup>**  
**TECHNOLOGIES**  
[www.metallographic.com](http://www.metallographic.com)

3601 E. 34th St.  
 Tucson, AZ 85713 USA  
 Phone +1 520-882-6598  
 FAX +1 520-882-6599  
[www.metallographic.com](http://www.metallographic.com)  
 email [pace@metallographic.com](mailto:pace@metallographic.com)

## Technical Data

Specification	MEGA-T400
Cut-off size (Blade diameter)	400 mm (16-inch)
Cutting Capacity	Max dia. 6-inch (150 mm)
Wheel Feed	Manual
Dimensions (WxDxH)	50 x 39 x 64-inches (hood closed) 50 x 39 x 83-inches (hood open)
Table Dimensions	14.6 x 14.2-inch (370mm x 360mm)
Cooling Unit	16 gallons (60 l)
Motor Power	7.5 hp (5.5 KW)
Speed (rpm)	2910 rpm at 208-380V/50 Hz 3492 rpm at 208-380V/60 Hz 1455 rpm at 440-480V/50 Hz 1740 rpm at 440-480V/60 Hz
Electrical Specifications	208Y, 380, 400, 480V 50/60 Hz (3 phase)
Model Type	Floor
Weight	700 lbs (300 kg)

