

MEGA-T400S

Manual Abrasive Cutter

- 16-inch wheel saw
- 1500-3500 rpm Variable speed cutting
- 2-15 amp adjustable current draw for fine cutting control
- Manual cutting
- High torque servo motor
- Overload flashing red light in chamber to warn of motor overload
- Wheel and table feed cutting
- 7-inch touch screen high resolution display
- Electronic braking for safety

- Removable side panels for pass through longer samples
- Highly reproducible
- External rinse nozzle for easy cleaning
- Cutting capacity up to 6-inch (150 mm solid stock or 3.15 x 12-inch (80 x 300 mm) samples using 350 mm (~14-inch) blade
- Powerful 10.3 hp (7.7 KW/21 Nm) constant torque servo motor (theoretical maximum)
- Twin t-slotted stainless steel tables
- Easy to use

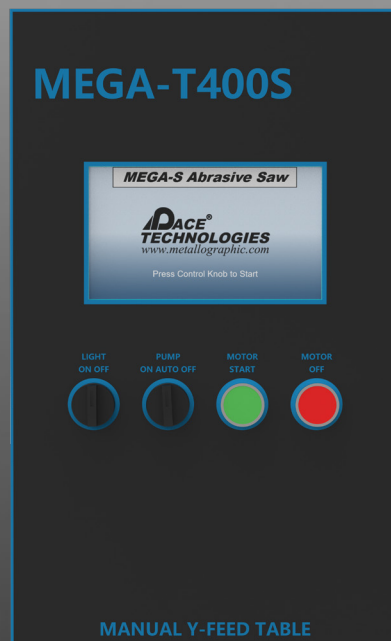
MEGA-T400S

Abrasive Cutter

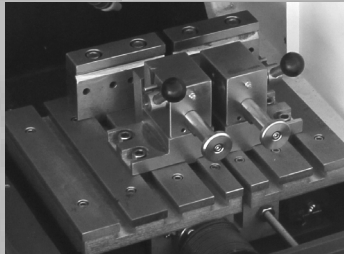
MEGA-T400S
Variable Speed
400 mm (~16-inch)
Abrasive Saw

Applications:
-Ferrous metals
-Non-ferrous metals

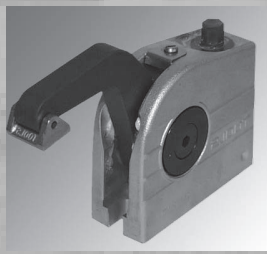
-Foundry castings
-Power metallurgy
-Heat treated parts
-Specialty alloys
-Wrought metals



Clamping Systems for MEGA-T400S Cut-off Machines



Fast Cam Locking Vise



Vertical Clamping Vise

Clamping Devices

Proper clamping or fixturing is required to prevent blade breakage and to optimize the cut. Vises range from a vertical clamping vise to fast cam locking devices.

Fast cam locking vise, right	Fast cam locking vise, left	Vertical clamping vise	65 mm (2.6-in) height adapter for Vertical vise
QCR-1100	QCL-1100	MG- 01	MG-H

Abrasive Cutting Fluids

Pace Product Name	Catalog Number	Packaging
MAXCUT Abrasive Cutting Fluid	MAXCUT-1000-128	1 gallon
MAXCUT Abrasive Cutting Fluid	MAXCUT-1000-5G	5 gallons
MAXCUT 2 Cutting Fluid with Anti-corrosion Additive	MAXCUT2-1000-128	1 gallon
MAXCUT 2 Cutting Fluid with Anti-corrosion Additive	MAXCUT2-1000-15G	5 gallons

16-inch (400mm) MAXCUT Abrasive Blades (32mm Arbor)

Pace Product Name	Catalog Number	Packaging
Soft non-ferrous metals (aluminum, tin, copper, zinc, etc.)	MAX-E400	10
Hard non-ferrous metals (titanium)	MAX-C400	10
Soft steels	MAX-E400	10
Case hardened steels	MAX-VHS400	10
Hard Steels	MAX-VHS400	10
Universal Thin Blade	MAX-A400	10
General Purpose Blade	MAX-I400	10
Diamond Blade	DMAX	each



PACE[®]
TECHNOLOGIES
www.metallographic.com

3601 E. 34th St.
 Tucson, AZ 85713 USA
 Phone +1-520-882-6598
 FAX +1- 520-882-6599
<https://www.metallographic.com>
 email pace@metallographic.com

Technical Data

Specification	MEGA-T400S
Cut-off size (Blade diameter)	400 mm (16-inch)
Arbor size	32 mm (~1.25-inch)
Cutting Capacity	Max diameter 6-inch (150 mm)
Cutting Capacity (HxD)	Maximum 3.15 x 12-inch (80 x 300 mm)
Wheel Feed & Table Feed	Manual
Vertical movement (z-axis)	5.12-inch (130 mm)
Table feed movement (y-axis)	5.9-inch (150 mm)
Screen display	7-inch touch screen
Dimensions (WxDxH)	48.2 x 51.4 x 63-inch (hood closed) 48.2 x 51.4 x 80-inch (hood open)
Table Dimensions	11 x 18.25-inch t-slot (280 x 470 mm)
Cooling Unit	14 gallons (53l)
Motor Power	10.3 hp (7.7KW/21Nm) (3-phase servo motor)
Speed (rpm)	Variable: 1500-3500 rpm
Electrical Specifications	208Y, 380V 50/60 Hz (3-phase)
Model Type	Floor
Weight	880 lbs (400 kg)