

**DACE**<sup>®</sup>  
**TECHNOLOGIES**  
*www.metallographic.com*

# **ZMS0745T** **Stereo** **Metallurgical** **Microscope**

**Applications:**

- Metals
- Semiconductors
- Glass
- Ceramics
- Minerals
- Composites
- Soft Metals
- Plastics
- Refractory Metals
- General metals

## **ZMS0745T Metallurgical Stereo Microscope**

The ZMS0745T trinocular stereo microscope (Part No. ZMS0745T) has an optical design for enhancing reproduction and true color imaging of the specimen. The ZMS0745T stereo microscope has a magnification range of 7X to approximately 45X and is ideal for low magnification documentation of the metallographic specimens prior to polishing and grinding. It is also useful for measuring cracks, weld penetration depth and other topographical features.



Stereo microscope image of filler metal in a steel weld



## Technical Specifications:

| Feature                      | Specification   |
|------------------------------|---|
| Total magnification          | 7X ~ 45X  |
| Eyepieces (standard)         | SWH10X  |
| Zoom objective magnification | 0.7X ~ 4.5X   |
| Working distance             | 4.6-inch (118 mm)   |
| Trinocular eyetubes          | Inclined 45 degrees from main body<br>(360 degree rotation) |
| Diopter adjustment           | +/- 6 degrees   |
| Interpupillary adjustment    | 2 ~ 3-inch (52 ~ 76 mm)                                     |
| Focus range                  | 3-inch (76 mm)  |
| Stage size                   | 5-inch (125 mm)   |
| Part No.                     | ZMS0745T  |

**PACE<sup>®</sup>  
TECHNOLOGII**

[www.metallographic.com](http://www.metallographic.com)

PACE Technologies

3601 E. 34th St

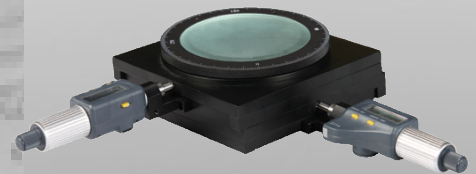
Tucson, AZ 85713 USA

Phone +1 520-882-6598

FAX +1 520-882-6599

[www.metallographic.com](http://www.metallographic.com)

email [pace@metallographic.com](mailto:pace@metallographic.com)



Stage with digital X-Y micrometers

## Accessories

| Description                   | Specification                                | Part Number |
|-------------------------------|--|-------------|
| Eyepieces                     | SWH10X/23mm eyepiece                         | 416-111     |
|                               | SWH15X/17mm eyepiece                         | 416-121     |
|                               | SWH20X/14mm eyepiece                         | 416-131     |
| Eyepieces<br>(with Divisions) | SWH10XD/23mm eyepiece with divisions         | 416-211     |
|                               | SWH15XD/17mm eyepiece with divisions         | 416-221     |
|                               | SWH20XD/14mm eyepiece with divisions         | 416-231     |
| Magnifier                     | 0.37X magnifying objective                   | 416-311     |
|                               | 0.5X magnifying objective                    | 416-321     |
|                               | 0.7X magnifying objective                    | 416-331     |
|                               | 1.5X magnifying objective                    | 416-341     |
|                               | 2X magnifying objective                      | 416-351     |
| Digital Camera<br>Adapter     | Camera Adapter 0.5X                          | 417-121     |
|                               | Camera Adapter 1X                            | 417-101     |
| Digital Camera                | 5 MP   | MD-50T      |
| Light sources                 | 4-Division LED Light source                  | 413-136     |
|                               | Fiber optic light source (150 W)             | 413-227     |
| Stage                         | Mechanical stage with digital X-Y micrometer | 419-162     |



C-mount  
camera  
adapter



LED Illuminator ML-144D



Fiber Optic Illuminator )

